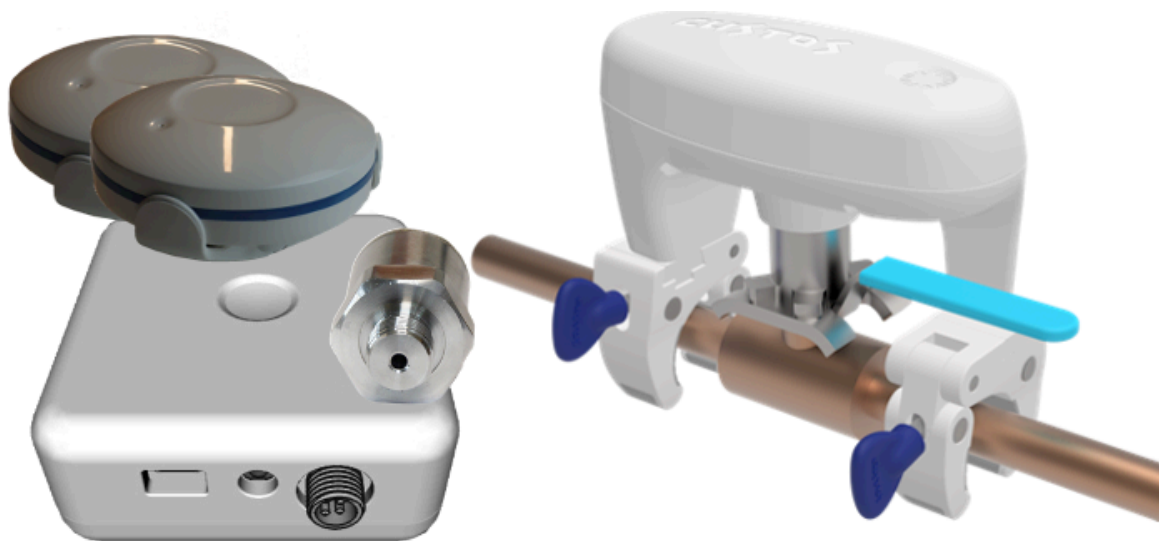




- 1. Product Description
- 2. Scope of Delivery



Leakage-Protection 'Plus' for Ball Valves

SKU: AQSBVS02

Version: 1.0

1. Product Description

The Aqua-Scope Leak Protection 'Plus' for ball valves offers comprehensive monitoring of a building's water pipes, automatically shutting off water in the event of leaks and wirelessly notifying residents. The system comprises four key components:

- The Aqua-Scope Monitor provides continuous monitoring of the entire piping network from a single location within the house. Equipped with an acoustic water sensor, the monitor detects leaks and features an external 1/4 inch water sensor attached to the housing. This sensor is conveniently mounted on the house water pipe using a T-piece at an easily accessible location. Beyond leak alarms, the device continuously monitors water pressure and temperature.
- The actuator is installed on an existing ball valve without disrupting water supply. It promptly shuts off the water upon detecting a leak, preventing



further damage. During routine pipe checks, even microleaks with a water loss of 4 ml/h or more are identified. Users have the flexibility to control water flow manually or set programmable timers through a mobile app, allowing for convenient on/off commands, such as during weekends.

- Two additional flood sensors are positioned at crucial points in the house and wirelessly report any leaks immediately.

Control of the system is centralized through a mobile phone app. Furthermore, data can be transmitted to an MQTT server or an HTTP 'webhook,' facilitating integration with modern Smart Home systems. The devices communicate using robust LoRa wireless technology, enabling installation on different floors, in the basement, or even outside the house.

2. Scope of Delivery

- BVSLWE02
 - Motor with power cable
 - wired flood sensor pad
 - 12 V Power Supply
- AQXWIE02
 - Water Monitor main device (without battery)
 - Pressure sensor head with 80 cm cable
 - 3/8 Inch water pipe connector (T-shaped)
 - One external flood sensor with cable
 - USB-C power cable and power supply
 - 19 mm wrench to unfasten and fasten the 3/8 Inch connections of the pipe connector
- 2* FLOWLWE02
 - Bracket
 - CR123 battery
 - External flood sensor with cable
 - screw and dowels